



SP7T to SP8T Electromechanical Switch

Normally Open , DC to 18 GHz, SMA, D-SUB

Electrical Characteristics:

Parameter	Value
Frequency Range	DC-18 GHz
RF Impedance	50 Ohms
Operation Mode	Normally Open
Switch Sequence	Break before make
Switching time	15 ms Max
Standard Actuator Life	2 million Min
Actuator Voltage Available	12 24 28 V
Actuator current	290 150 130 mA



RF Specifications:

Frequency (GHz)	DC-4	4-8	8-12.4	12.4-18
Insertion Loss (dB max.)	0.2	0.3	0.4	0.6
Isolation (dB min.)	75	65	60	60
VSWR (max.)	1.2:1	1.3:1	1.4:1	1.6:1
RF Power CW (Watts max.)	100	70	60	45

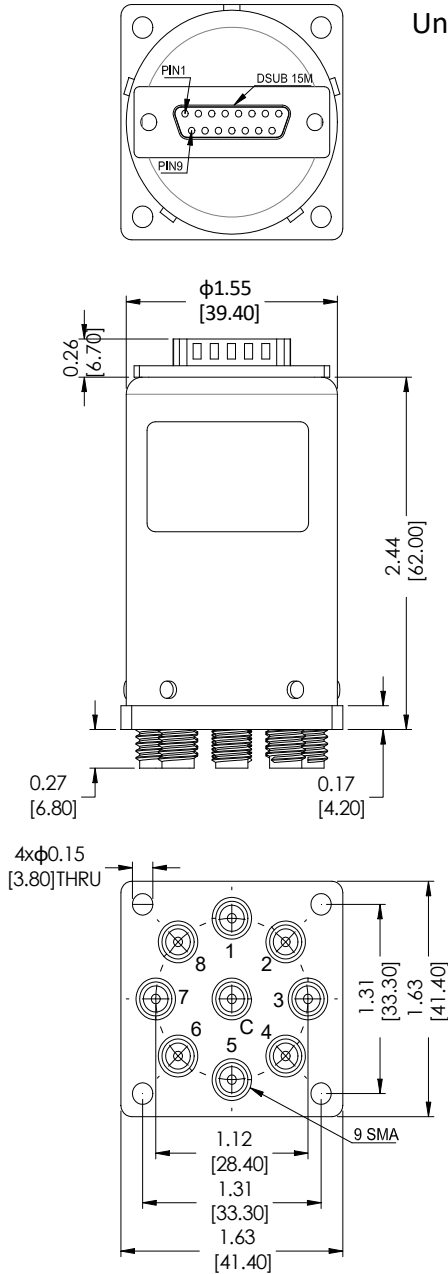
Environmental And Physical Characteristics:

Parameter	Value
Operating Temperature	-25°C to +65°C(Standard) -55°C to +85°C(Optional)
Vibration(operating)	10G RMS, 20-2000HZ
Shock(non operating)	50G, 1/2Sine, 12msec
Connector Type	SMA Female
Control Connector	D-SUB 15 PIN Male
Weight	300g Max

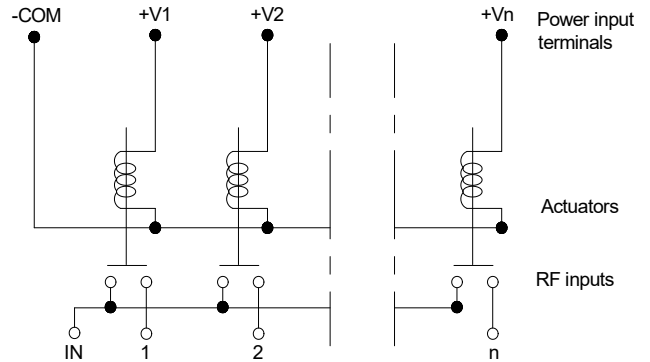


SP7T to SP8T Electromechanical Switch

Outline Drawing:



Schematic:



Pin NO	FUNCTION	15 PIN D-SUB		RF Connect Used	
		SP7T	SP8T	SP7T	SP8T
1	V1	1	1		
2	V2	2	2		
3	V3	3	3		
4	V4	4	4		
5	V5	5	5		
6	V6	6	6		
7	V7	7	7		
8	V8				8
9	-COM				
10	NC				
11	NC				
12	NC				
13	NC				
14	NC				
15	NC				

Part Number:

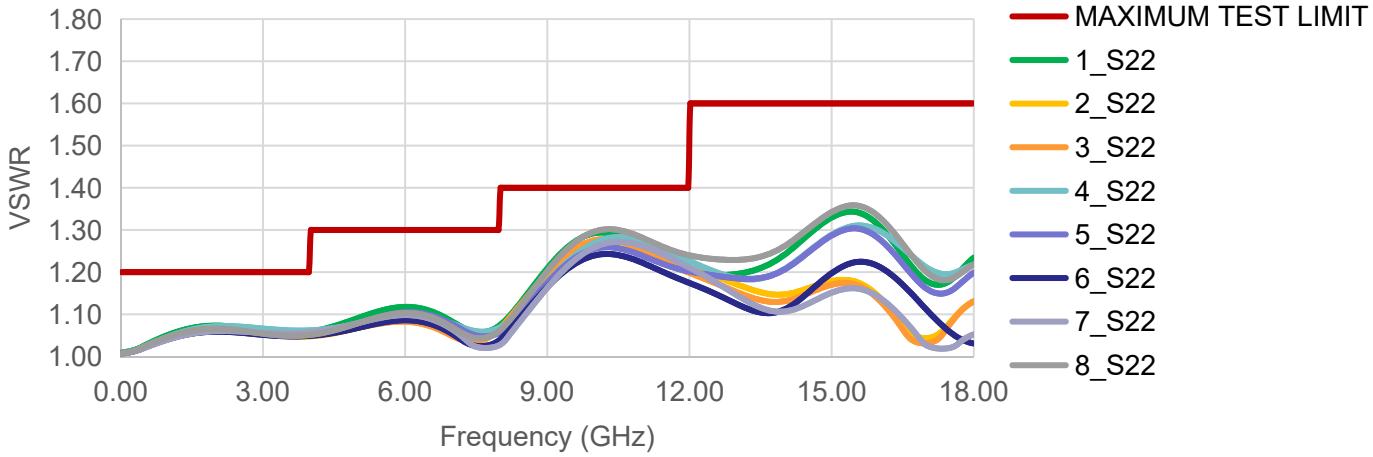
Part Number		Actuator voltage	Option
SP7T	SP8T		
R17-SN12018-D	R18-SN12018-D	12 V	-S(-55°C - +85°C)
R17-SN24018-D	R18-SN24018-D	24 V	
R17-SN28018-D	R18-SN28018-D	28 V	



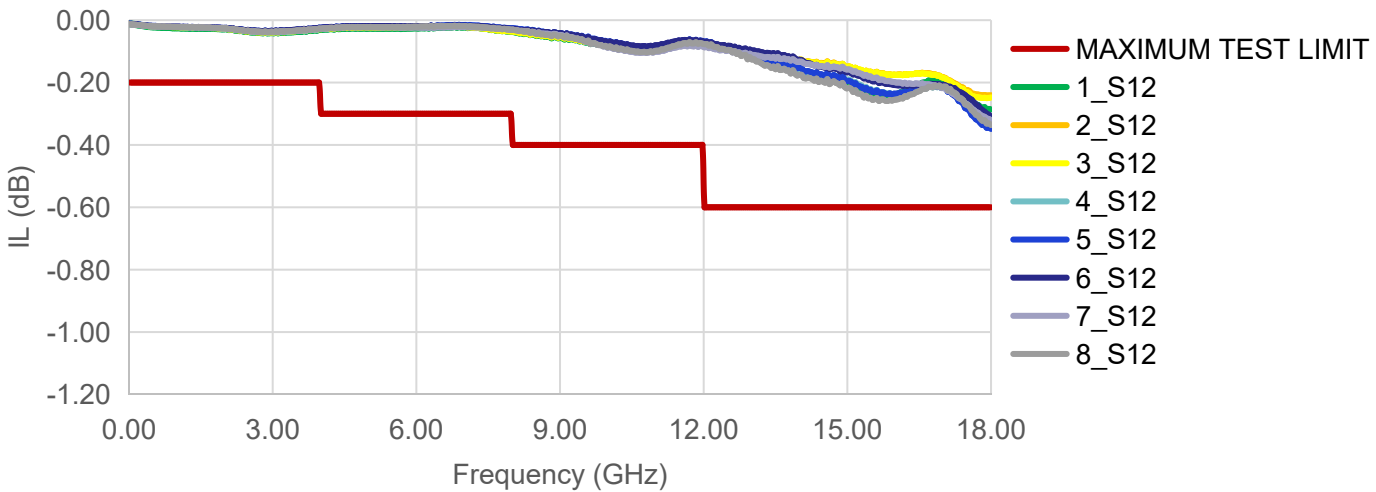
SP7T to SP8T Electromechanical Switch

Typical Performance Data:

VSWR



INSERTION LOSS



ISOLATION

