



# SP7T to SP8T Electromechanical Switch

Pulse Latching , DC to 18 GHz, SMA,Terminated, D-SUB

## Electrical Characteristics:

Parameter	Condition
Frequency Range	DC-18GHz
RF Impedance	50 Ohms
Operation Mode	Pulse Latching
Switch Sequence	Break before make
Switching time	15 ms Max
Standard Actuator Life	1 million Min
Termination Power CW	2 W
Actuator voltage Available	12 24 28 V
Actuator current	350 185 160 mA



## RF Specifications:

Frequency (GHz)	DC-6	6-12	12-18
Insertion Loss (dB max.)	0.3	0.4	0.5
Isolation (dB min.)	80	70	60
VSWR (max.)	1.3:1	1.4:1	1.5:1
RF Power CW (Watts max.)	80	50	45

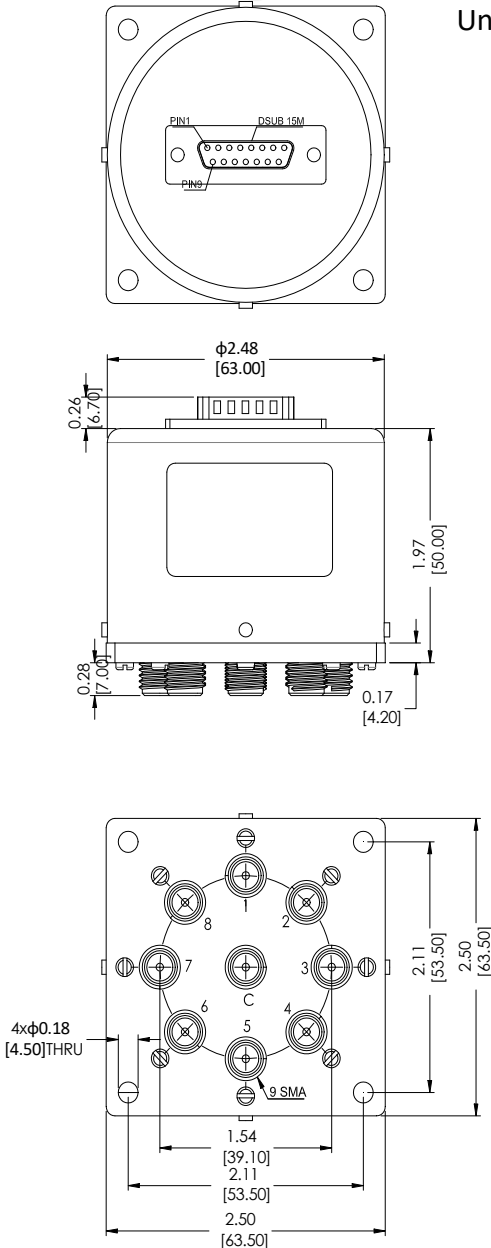
## Environmental And Physical Characteristics:

Parameter	Condition
Operating Temperature	-25°C to +65°C(Standard ) -55°C - +85°C(Optional)
Vibration(operating)	10G RMS, 20-2000HZ
Shock(non operating)	50G, 1/2Sine, 12msec
Connector Type	SMA Female
Control Connector	D-SUB 15PIN Male
Weight	330g Max



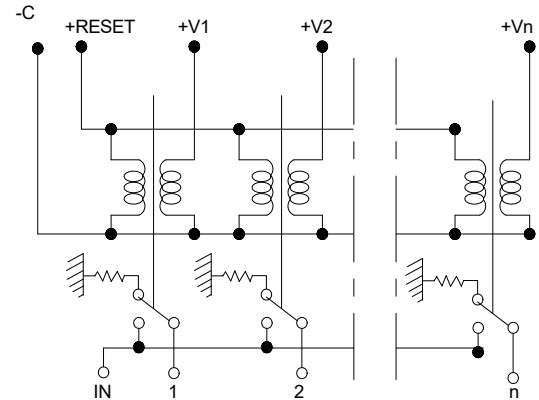
# SP7T to SP8T Electromechanical Switch

## Outline Drawing:



Unit: Inch(mm)

## Schematic:



Pin NO	FUNCTION	RF Connect Used	
		SP7T	SP8T
1	V1	1	1
2	V2	2	2
3	V3	3	3
4	V4	4	4
5	V5	5	5
6	V6	6	6
7	V7	7	7
8	V8		8
9	-COM		
10	VR(Reset)		
11	NC		
12	NC		
13	NC		
14	NC		
15	NC		

## Part Number:

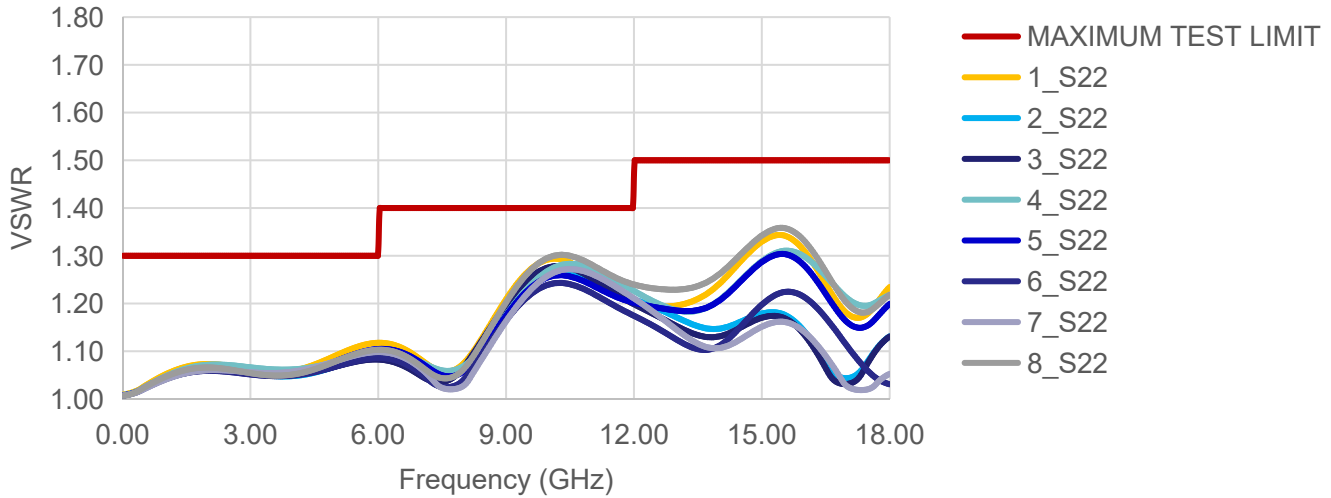
Part Number		Actuator voltage	Option
SP7T	SP8T		
R17-SL12018-DT	R18-SL12018-DT	12 V	-S(-55°C - +85°C)
R17-SL24018-DT	R18-SL24018-DT	24 V	
R17-SL28018-DT	R18-SL28018-DT	28 V	



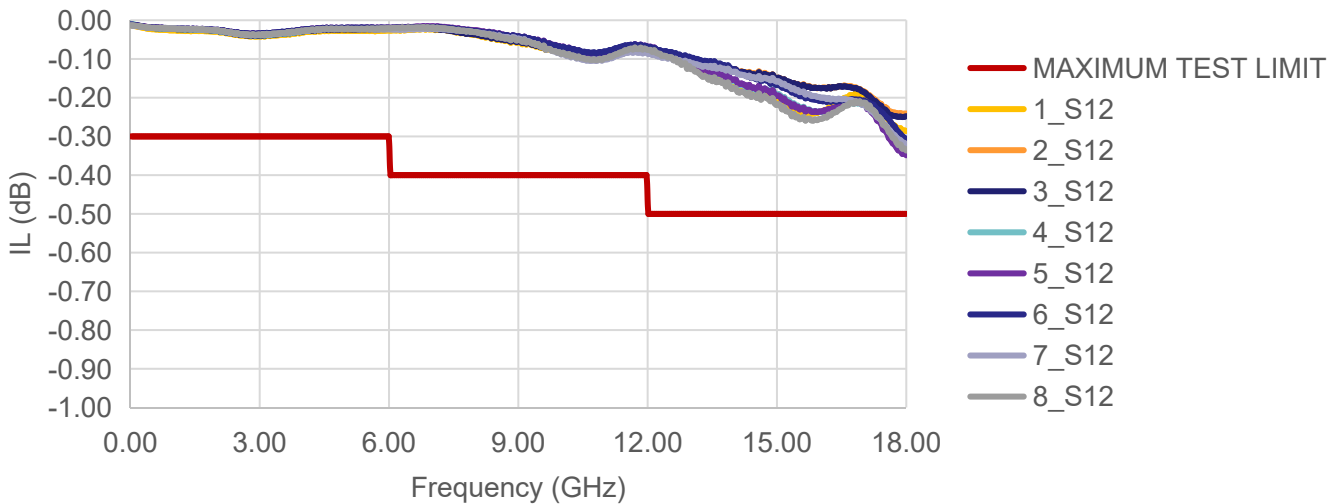
# SP3T to SP6T Electromechanical Switch

## Typical Performance Data:

### VSWR



### INSERTION LOSS



### ISOLATION

