



SP7T to SP8T Electromechanical Switch

Normally Open , DC to 18 GHz, SMA, Terminated, D-SUB

Electrical Characteristics:

Parameter	Condition		
Frequency Range	DC-18GHz		
RF Impedance	50 Ohms		
Operation Mode	Normally Open		
Switch Sequence	Break before make		
Switching time	15 ms Max		
Standard Actuator Life	1 million Min		
Termination Power CW	2 W		
Actuator voltage Available	12	24	28 V
Actuator current	330	170	140 mA



RF Specifications:

Frequency (GHz)	DC-6	6-12	12-18
Insertion Loss (dB max.)	0.3	0.4	0.5
Isolation (dB min.)	80	70	60
VSWR (max.)	1.3:1	1.4:1	1.5:1
RF Power CW (Watts max.)	80	50	45

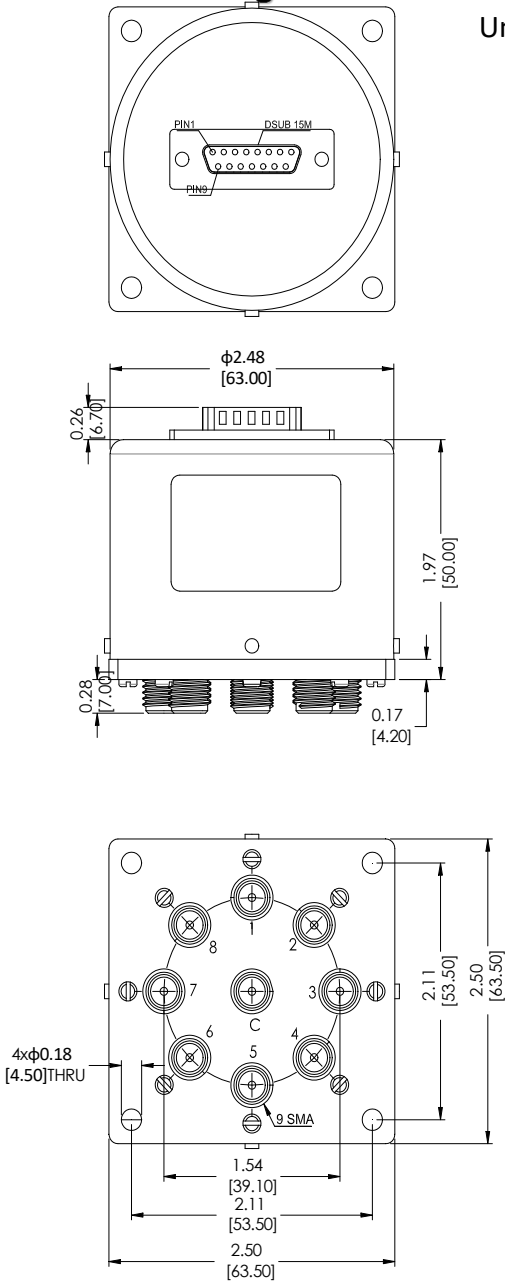
Environmental And Physical Characteristics:

Parameter	Condition
Operating Temperature	-25°C to +65°C(Standard) -55°C - +85°C(Optional)
Vibration(operating)	10G RMS, 20-2000HZ
Shock(non operating)	50G, 1/2Sine, 12msec
Connector Type	SMA Female
Control Connector	D-SUB Male
Weight	355g Max

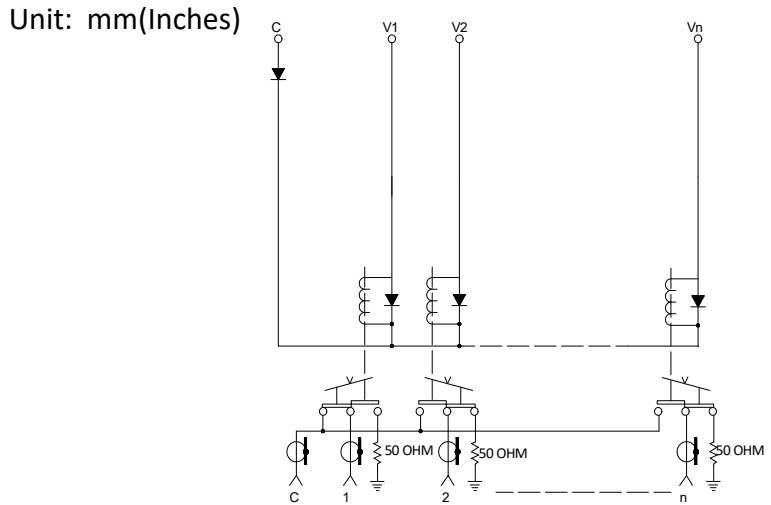


SP7T to SP8T Electromechanical Switch

Outline Drawing:



Schematic:



Pin NO	FUNCTION	RF Connect Used	
		SP7T	SP8T
1	V1	1	1
2	V2	2	2
3	V3	3	3
4	V4	4	4
5	V5	5	5
6	V6	6	6
7	V7	7	7
8	V8		8
9	-COM		
10	NC		
11	NC		
12	NC		
13	NC		
14	NC		
15	NC		

Part Number :

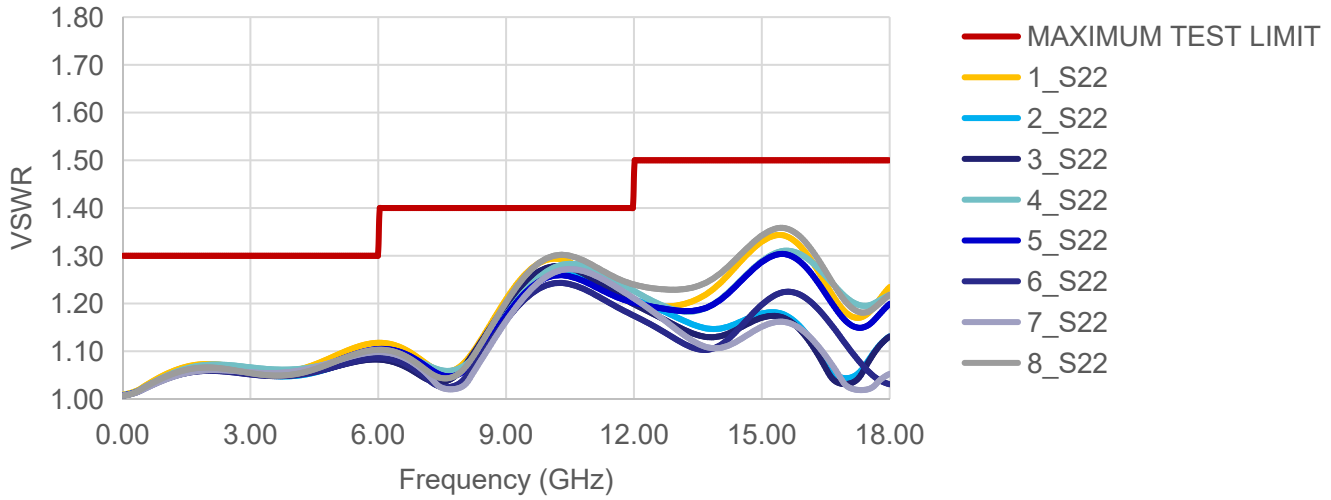
Part Number		Actuator voltage	Option
SP7T	SP8T		
R17-SN12018-DT	R18-SN12018-DT	12 V	-S(-55°C - +85°C)
R17-SN24018-DT	R18-SN24018-DT	24 V	
R17-SN28018-DT	R18-SN28018-DT	28 V	



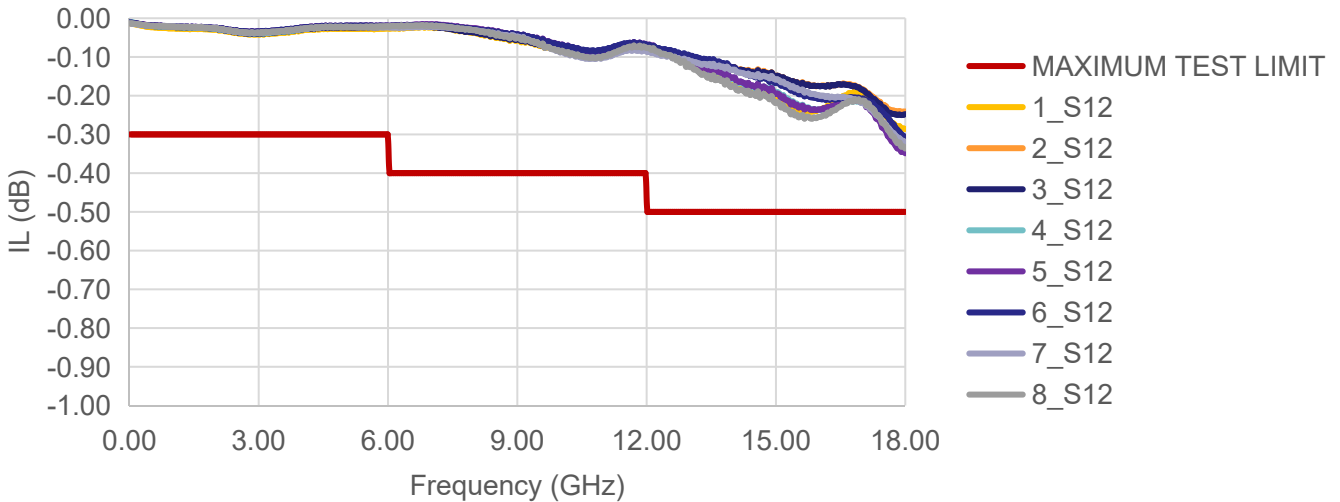
SP7T to SP8T Electromechanical Switch

Typical Performance Data:

VSWR



INSERTION LOSS



ISOLATION

